



Martini Prime

- Developed to increase the low frequency acoustic characteristics of high-performance plasterboard, masonry and aerated concrete composite wall systems used in residential apartment projects.
- Non-irritant and does not require any protective clothing or masks during installation.
- Available in standard white colour. Black or grey available upon request.

Applications

Prime is ideal for use in high-performance acoustic partition and ceiling systems in multi-residential apartments. Prime is engineered to produce performance results to comply with BCA/NCC acoustic provisions.

Acoustic performance

R_w means weighted sound reduction index. It is a single number used to describe the performance of a system – generally a wall – as a barrier to noise transmission.

An increase of one R_w point is equivalent to a reduction of one decibel in noise level.

C_{tr} is a spectrum adaptation factor that is used as a correction factor to R_w and puts emphasis on low frequency sound transmission. The BCA/NCC deem to satisfy provision requires common wall and ceilings separating Single Occupancy Units (SOU) to have a minimum acoustic performance of $R_w + C_{tr}$ 50.

For more detailed information refer to the Martini Acoustic Design Guide.

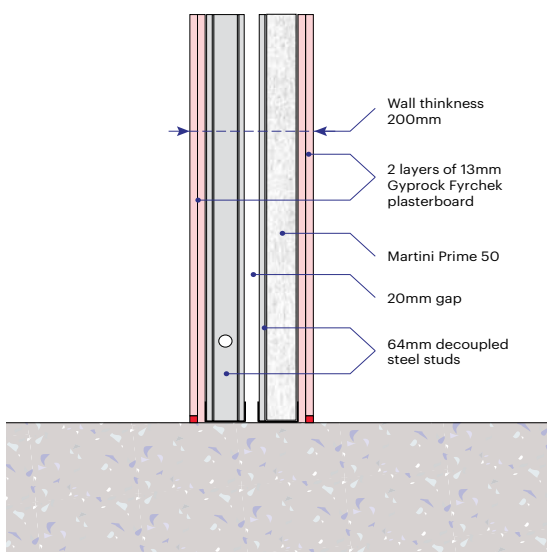
Sample wall systems

The following are typical examples of high performance acoustic wall systems commonly used in multi-residential projects:

Sample system 1

R_w 61, $R_w + C_{tr}$ 50*

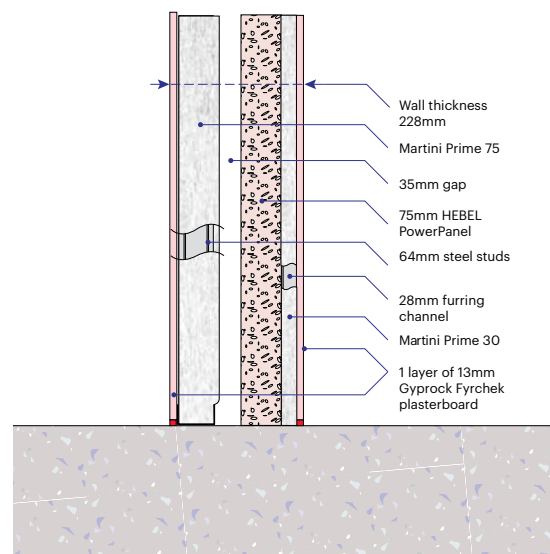
Two rows of 64mm decoupled steel studs set in separate tracks separated by 20mm gap with two layers of 13mm Gyprock Fyrchek to each external face with Martini Prime 50 fitted into one cavity.



Sample system 2

R_w 62, $R_w + C_{tr}$ 50*

One layer of 13mm fire rated plasterboard fixed to 28mm furring channel, 75mm Hebel Powerpanel, 35mm gap, 64mm steel studs, 1 layer 13mm Gyprock Fyrchek, Martini Prime 30 in 28mm furring channel gap and Martini Prime 75 in the steel stud cavity.



*Acoustic performance based on empirical data and expert opinion.

www.csrmartini.com.au





Environmental benefits

Prime is manufactured from thermally bonded polyester fibre with up to 80% recycled fibre content from post-consumer PET packaging such as empty drink bottles. The product is 100% recyclable and has very high reuse potential as insulation. Martini's Product Stewardship Program can be viewed at www.csrmartini.com.au.

- No chemicals or resin binders are used in manufacture.
- Odourless and contains no harmful volatile organic compounds (VOC).
- No waste is generated in manufacture.
- No water or ozone-depleting gases are used in manufacture.
- No chlorides are present in the product.
- Suitable for use in Green Star™ projects.

Martini Prime roll product information

| Product | R-Value* | Thickness (mm) # | Roll width (mm) | Roll length (m) | Rolls per pack | m ² per pack | Product Code |
|-----------|----------|------------------|-----------------|-----------------|----------------|-------------------------|--------------|
| Prime 30 | R0.7 | 30 | 610 | 20 | 2 | 18.3 | 130513 |
| Prime 50 | R1.1 | 50 | 610 | 15 | 2 | 12.2 | 130514 |
| Prime 65 | R1.4 | 65 | 610 | 10 | 2 | 12.2 | 130515 |
| Prime 75 | R1.7 | 75 | 610 | 10 | 2 | 12.2 | 130516 |
| Prime 100 | R2.2 | 100 | 610 | 7 | 2 | 8.5 | 130517 |

*Calculated R-Value.

Martini Prime is also available in 450mm roll width on request and is subject to minimum quantities. Please contact CSR Martini for further details.

Product thickness recovery time can vary depending on length of time in compressed packaging and air temperature.

Physical description and properties

| | | | | | | | | | |
|-----------------------------|--|--------------|---|-----------------|---|--------------|---|-----------------|-----|
| Volatiles: | Nil | | | | | | | | |
| Specific Gravity: | 1.38 | | | | | | | | |
| Flash Point: | None allocated | | | | | | | | |
| Other Properties: | Non-allergenic, low irritant, low flame response, resilient | | | | | | | | |
| Ingredients: | Organic, long chain synthetic polymer | | | | | | | | |
| Max Service Temp: | 150°C | | | | | | | | |
| Alkalinity: | pH 7.8 (pH 7 is neutral) | | | | | | | | |
| Moisture Absorption: | Exposure to an atmosphere of 50°C & 95% RH for four days gives moisture absorption of less than 0.2% by volume | | | | | | | | |
| Fire Resistance: | <p>The following results were obtained when CSR Martini product was subjected to early fire hazard testing in accordance with Australian Standards AS 1530.3.</p> <table border="1"> <tbody> <tr> <td>Ignitability</td> <td>0</td> </tr> <tr> <td>Spread of Flame</td> <td>0</td> </tr> <tr> <td>Heat Evolved</td> <td>0</td> </tr> <tr> <td>Smoke Developed</td> <td>0-1</td> </tr> </tbody> </table> | Ignitability | 0 | Spread of Flame | 0 | Heat Evolved | 0 | Smoke Developed | 0-1 |
| Ignitability | 0 | | | | | | | | |
| Spread of Flame | 0 | | | | | | | | |
| Heat Evolved | 0 | | | | | | | | |
| Smoke Developed | 0-1 | | | | | | | | |

Disclaimer: The contents of this brochure are copyright protected and may not be reproduced in any form without prior written consent of CSR Martini. Recommendations and advice regarding the use of the products described in this brochure are to be taken as a guide only, and are given without liability on the part of the company or its employees. We reserve the right to change product specifications without prior notification, please refer to the CSR Martini website for the latest version of this document. The purchaser should independently determine the suitability of the product for the intended use and application.

www.csrmartini.com.au